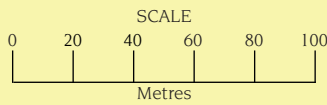
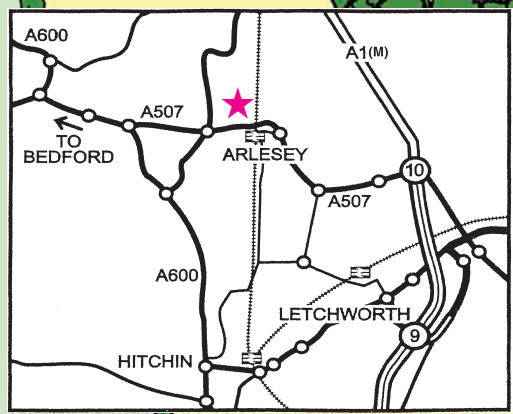
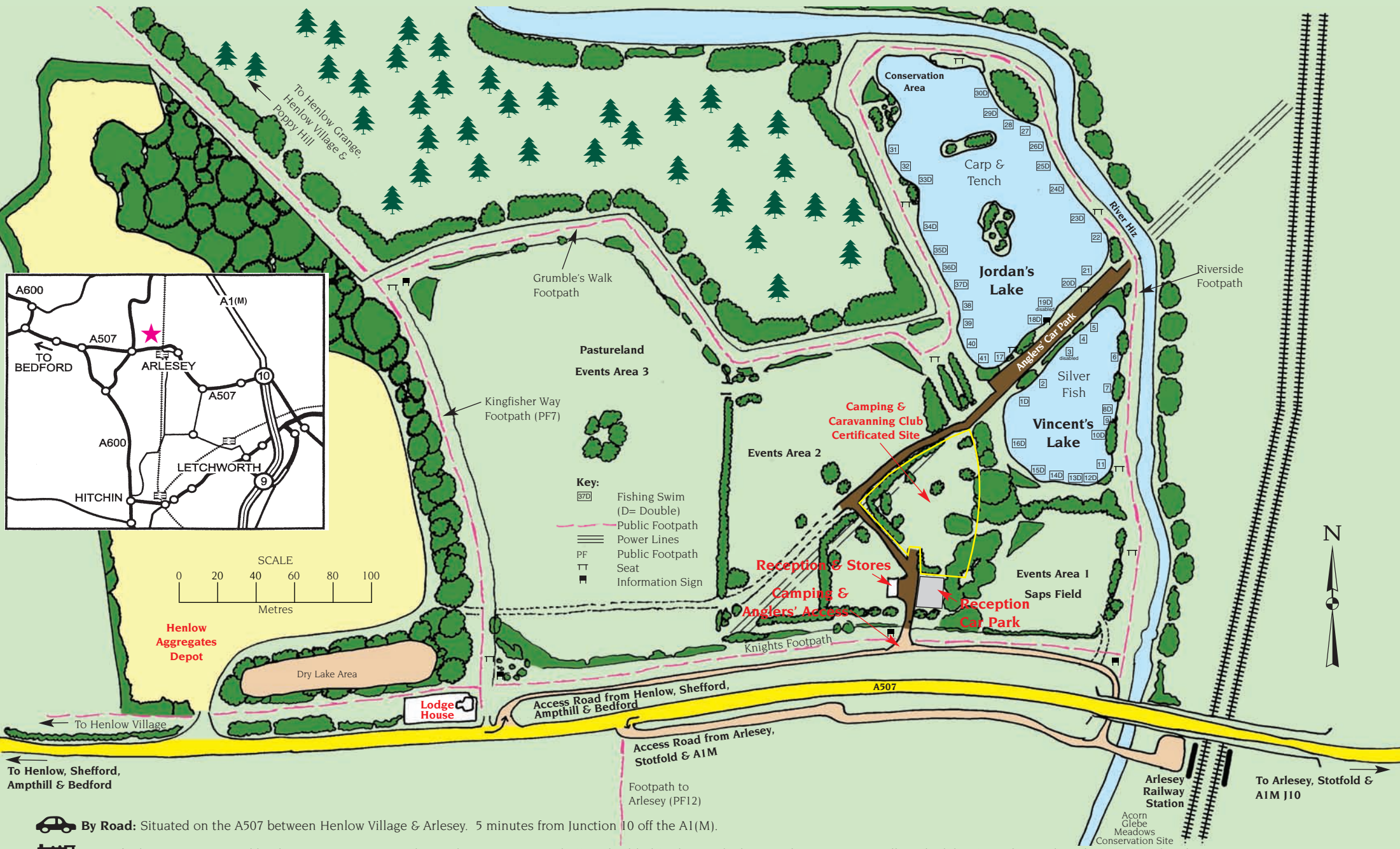


HENLOW BRIDGE LAKES, RIVERSIDE & PUBLIC FOOTPATHS



- Key:**
- 87D Fishing Swim (D= Double)
 - Public Footpath
 - Power Lines
 - PF Public Footpath
 - TT Seat
 - Information Sign

By Road: Situated on the A507 between Henlow Village & Arlesey. 5 minutes from Junction 10 off the A1(M).

By Rail: The station is served by the Kings Cross to Peterborough train service and offers disabled facilities, which are within 4 minutes walk to the lakes from the northern line. National Rail Enquiries: 08457 484950.

By Bus: Regular Stagecoach Bus No 'Mars 3' between Bedford and Hitchin, with bus stops on the Arlesey railway bridge.